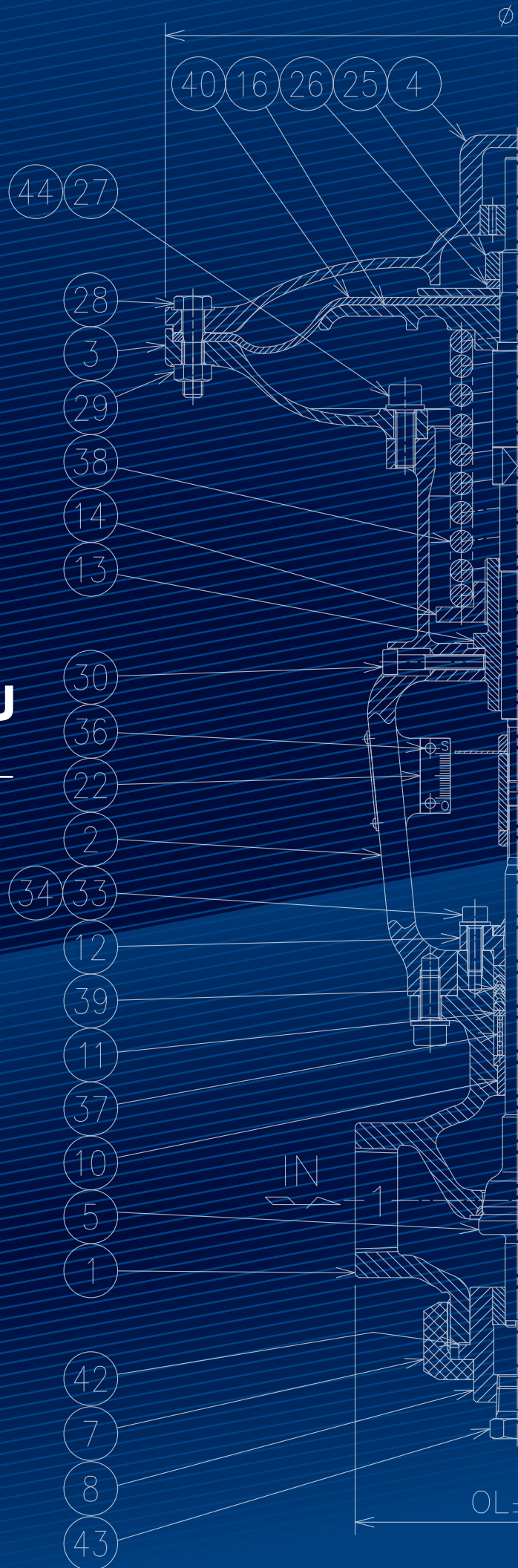


# **ROCKY-ICHIMARU**

Tire Curing Press Valves



# Y-type Check Valve YL Series

A check valve enables the flow of fluid to be maintained in a certain direction and prevents backflow. Our Y-type check valve differs from a typical lift check valve in that the stem is positioned at an angle, giving smoother fluid flow when the disc is opened.

## Main Specifications

Fluids	Steam, N2 Gas, Air, Hot&Cold Water
Maximum Working Pressure	3.2MPa
Cracking Pressure	0.01MPa*1
Maximum Working Temperature	205° C
Connection Specs	Ports Threaded End (Rc, NPT)
	Flanged End (JIS 20K, ASME Class 300, DIN PN40)
Material of main parts*2	Body : SCS13
	Flange : SUS304 or S25C
	Guide Plug, Guide Cover : Brass
	Disc : SUS403
	Disc Plate : Glass fiber reinforced PTFE

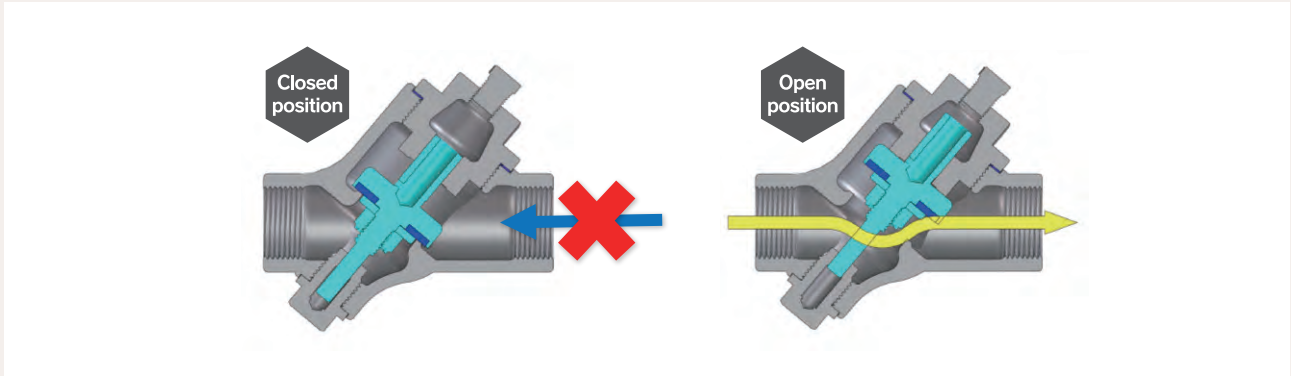
\*1. Load pressure required to open valve

\*2. See valve assembly drawings for details

Appearance		
Model Number	YL1211-□□	YL1212-□□
End Connection	Threaded End	Flanged End



**Description of Operation**



**Product Coding**

	N1	N2	N3	N4	N5	N6	N7	N8	N9
<b>YL</b>	<b>1</b>	<b>2</b>	<b>1</b>	<b>2</b>	<b>20</b>	<b>J</b>		<b>Y</b>	

Symbol	Meaning of symbol	Code	Meaning of code	Remarks
N1	Model	1	1st Model	
N2	Number of Ports	2	2-way type	
N3	Function	1	NC	
N4	End Connection	1	Threaded End	
		2	Flanged End	
N5	Nominal Size*	15	DN15	
		20	DN20	
		25	DN25	
		32	DN32	
		40	DN40	
N6	End Connection Flange Type	Nil	-	No code is specified if all connections are threaded end (if N4 is "1").
		J	JIS 20K	Indicates the specification of the flanged end.
		A	ASME Class 300	
		D	DIN PN40	
N7	End Connection Thread Type	Nil	-	No code is specified if all connections are flanged end (if N4 is "2").
		P	Rc	Indicates the specification of the threaded end.
		N	NPT	
N8	End Connection Flange Material	Nil	Steel (S25C)	Flange material is S25C.
		Y	SUS304	Flange material is SUS304.
N9	Specialized Code	Z□□	Specialized Specification	Bespoke codes (e.g.Z1) is used for specialized options.

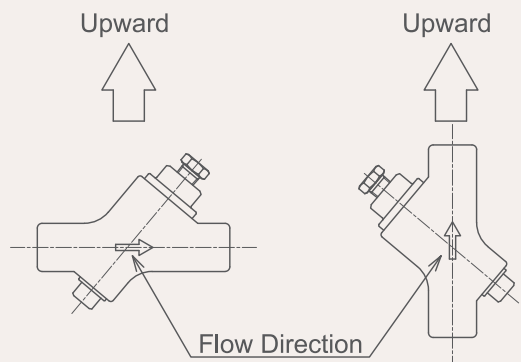
\*Contact us directly about size DN50.

**Specialized Specifications (Examples)**

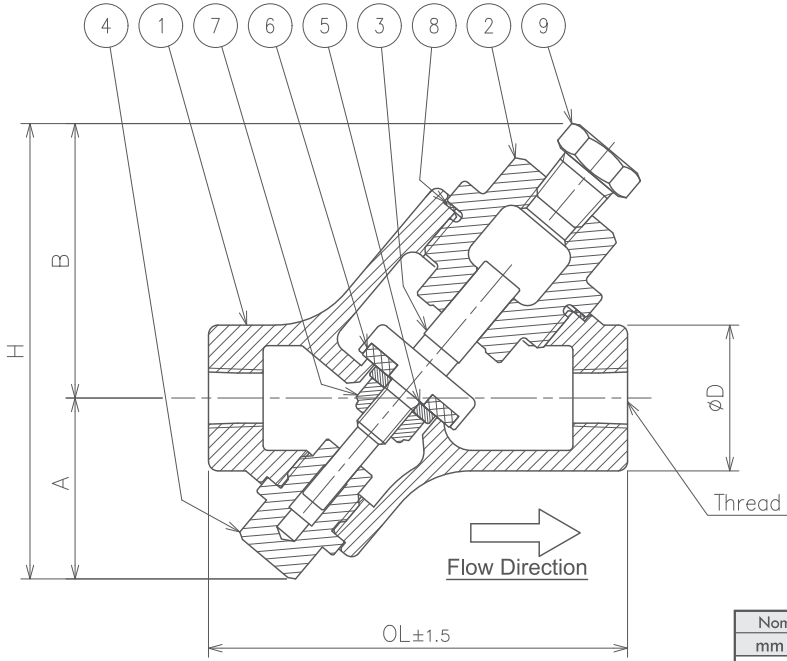
- Disc plate: carbon graphite reinforced PTFE (Specialized Code: Z3)
- CRN compliance (Specialized Code: Z98)

**Warnings**

- The direction of flow is embossed on the valve body. Be sure to fit in the correct orientation.
- The internal structure of this valve is dependent on the installed position. To avoid poor operation, ensure it is installed in the correct orientation.



**YL1211-□□ Ports 1 & 2 Threaded**

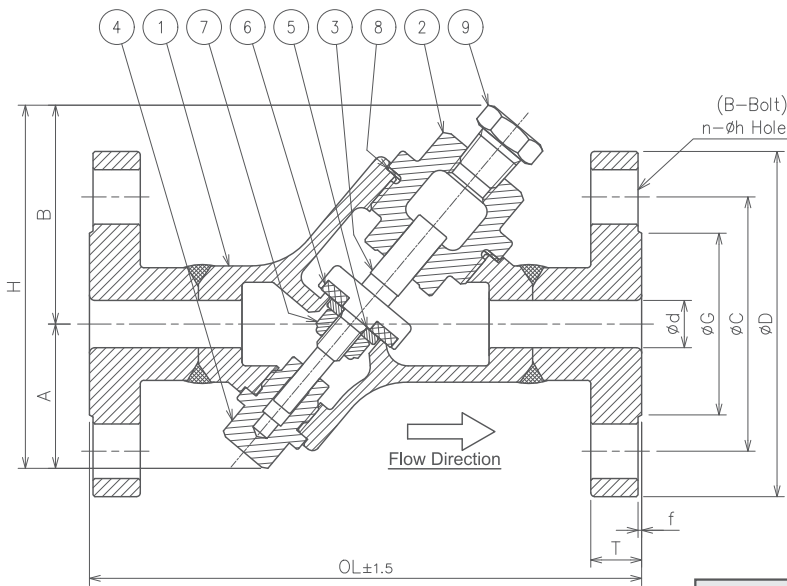


☆: Recommended Spare Parts

9	Hexagon Head Plug
8	Gasket
7	Lock Nut
☆ 6	Disc Plate
5	Washer
4	Guide Plug
3	Disc
2	Guide Cover
1	Body

Nominal Size		Dimensions (mm)					Weight (kg)
mm	inch	ØD	OL	A	B	H	
15	1/2	32	92	42	62	104	0.9
20	3/4	38	111	48	70	118	1.5
25	1	44	132	52	74	126	2.1
32	1-1/4	55	145	60	83	143	2.8
40	1-1/2	62	152	65	90	155	3.5

**YL1212-□□ Ports 1 & 2 Flanged**



☆: Recommended Spare Parts

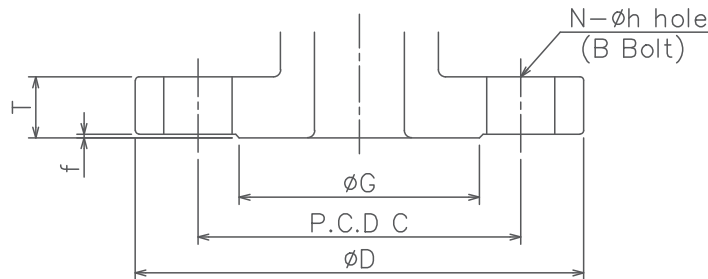
9	Hexagon Head Plug
8	Gasket
7	Lock Nut
☆ 6	Disc Plate
5	Washer
4	Guide Plug
3	Disc
2	Guide Cover
1	Body & Flange

Nominal Size		Dimensions (mm)						Weight(kg)			
mm	inch	Ød	OL			A	B	H			
			JIS	ASME	DIN				JIS	ASME	DIN
15	1/2	13	152	147	147	42	62	104	2.4	2.2	2.5
20	3/4	19	170	178	178	48	70	118	3.4	4.2	3.8
25	1	25	195	195	195	52	74	126	5.0	5.1	4.8
32	1-1/4	32	220	215	215	60	83	143	6.6	6.7	6.8
40	1-1/2	40	225	241	241	65	90	155	7.7	9.0	8.5

\*For flange dimensions, please refer to the appendix on page 50.

# Reference Materials

## JIS/ANSI/DIN Piping Flange Dimension List



※All of our valve flange surfaces have a smooth finish ( $Ra \leq 3.2$ ).

### JIS 20K Flange Dimensions

Unit: mm

Nominal Size		Dimensions of Flange Part				Bolt Holes			Bolt Size
		Flange Diameter	Thickness	RF Part		Pitch Circle Diameter	Number	Hole Diameter	
mm	inch			D	T				Raised Height
15	1/2	95	14	1	51	70	4	15	M12
20	3/4	100	16	1	56	75	4	15	M12
25	1	125	16	1	67	90	4	19	M16
32	1-1/4	135	18	2	76	100	4	19	M16
40	1-1/2	140	18	2	81	105	4	19	M16
50	2	155	18	2	96	120	8	19	M16
65	2-1/2	175	20	2	116	140	8	19	M16
80	3	200	22	2	132	160	8	23	M20

JIS B 2220: 2012

### ANSI/ASME Class 300 Flange Dimensions

Unit: mm

Nominal Size		Dimensions of Flange Part				Bolt Holes			Bolt Size
		Flange Diameter	Thickness	RF Part		Pitch Circle Diameter	Number	Hole Diameter	
mm	inch			D	T				Raised Height
15	1/2	95	14.5	1.6	35	66.5	4	15	1/2"
20	3/4	117	16	1.6	43	82.5	4	19	5/8"
25	1	124	18	1.6	51	89.0	4	19	5/8"
32	1-1/4	133	19.1	1.6	63.5	98.5	4	19	5/8"
40	1-1/2	156	21	1.6	73	114.5	4	22	3/4"
50	2	165	22.3	1.6	92	127.0	8	19	5/8"
65	2-1/2	190	25.5	1.6	104.6	149.4	8	22	3/4"
80	3	210	28.5	1.6	127	168.1	8	22	3/4"

ANSI/ASME B 16.5: 1996

### DIN PN40 Flange Dimensions

Unit: mm

Nominal Size		Dimensions of Flange Part				Bolt Holes			Bolt Size
		Flange Diameter	Thickness	RF Part		Pitch Circle Diameter	Number	Hole Diameter	
mm	inch			D	T				Raised Height
15	1/2	95	16	2	45	65	4	14	M12
20	3/4	105	18	2	58	75	4	14	M12
25	1	115	18	2	68	85	4	14	M12
32	1-1/4	140	18	2	78	100	4	18	M16
40	1-1/2	150	18	3	88	110	4	18	M16
50	2	165	20	3	102	125	4	18	M16
65	2-1/2	185	22	3	122	145	8	18	M16
80	3	200	24	3	138	160	8	18	M16

EN 1092-1: 2001



<Manufacturer>

**ROCKY-ICHIMARU Co., Ltd.**

601, Oaza Tsunemochi, Chikugo City,

Fukuoka 833-0016, JAPAN

Phone +81-942-53-7510

FAX +81-942-52-8799

<https://www.rocky-ichimaru.co.jp>

Email [info@ml.rocky-ichimaru.co.jp](mailto:info@ml.rocky-ichimaru.co.jp)



<Sole Distributor>

**RIX Corporation**

1-15-15, Sanno, Hakata-ku

Fukuoka 812-8672, JAPAN

Phone +81-92-472-7311

FAX +81-92-472-7335

<https://www.rix.co.jp>